

# Stone Pony Tech/ Info Rider

**Updated 01/01/18. This rider has changed from previous versions and supersedes all those dated earlier than 01/01/18.**

**Facility GM:** Caroline O'Toole [cot508@aol.com](mailto:cot508@aol.com)

**Production Manager:** Alexa Mazurkiewicz [alexa@asburyaudio.com](mailto:alexa@asburyaudio.com)

**Audio:** Brett Smith [brett@asburyaudio.com](mailto:brett@asburyaudio.com)

**Lighting:** Dwight Kelly [bigdee@asburyaudio.com](mailto:bigdee@asburyaudio.com)

**House Promoter:** Kyle Brendle [ponyrocks89@yahoo.com](mailto:ponyrocks89@yahoo.com)

**Facility phone number:** 732-502-0600

## Load in and Parking:

Physical address **913 Ocean Avenue, Asbury Park, NJ 07712** [MAP LINK](#)

You will enter the Asbury Park Waterfront on Asbury Avenue, regardless of the highway that you start from. As you approach the waterfront, make the left onto Kingsley Avenue, which is the last traffic light before Ocean Avenue. GPS and map programs will likely tell you to continue onto Ocean Ave from Asbury Ave, however this forces you to go around the block multiple times due to one way streets. From Kingsley you will make the 2<sup>nd</sup> right turn onto 2<sup>nd</sup> Avenue. You will then make the immediate right into the private lot at 2<sup>nd</sup> and Kingsley. There may be a closed gate marked "private parking." If the lot is unattended when you arrive, you can open the gates, however, please close them behind you. Once in the lot, proceed to the southern end (the direction that you are facing on entry) and back any trucks/ trailers to the large (16') fence opening. Please leave enough clearance for your ramps/ gates as well as any other tour/ opener vehicles. If you are arriving well before your load in time, or leaving well after load out, please provide the PM with that information so that proper arrangements can be made as this lot is shared with several venues and we often have one tour pulling in as another is pulling out. Please note that we can no longer park any vehicles, other than those that fit into a single parking space, on the streets unless specific arrangements have been approved by the City in advance. The venue and or promoter will not pay any parking tickets or fees related to on street parking.

Load is at street level, 150' push to stage.

Load through full size garage door.

Stage is two steps up from ground level, a ramp is provided as needed.

If you are arriving at or near your load in time, please contact the PM, Alexa. If we have a clear street and your driver is not up against his/ her drivetime limit, we may be able to have you park on 2<sup>nd</sup> Avenue for load in (20 foot push instead of 150) then move the bus/ truck to our lot.

**TRASH:** *Please do not leave loose trash or garbage bags outside of your tour vehicles. A staff member can provide you with garbage cans or you can feel free to use the dumpsters that will be to your right. As we are an oceanfront community, there are large pigeons and seagulls that will make a mess of any loose trash, which results in complaint and or fines from the city and Clean Ocean Action. Any fines will be billed back to the band, booking agent, or promoter. Thank you for your cooperation in this matter.*

## Dressing Rooms:

There are 2 dressing rooms, a hospitality area, and a small production office. These are located in the adjoining building. There is no public access to the building, however the route from the dressing rooms to the stage does require being outside (in a non public area) for about 40 feet. Each of these two dressing rooms is 19x20 feet and furnished. One has a private bath. There are two additional baths and one shower in the common area.

***Please note that in most cases the dressing rooms will close no more than two hours after the end of show.***

## Internet:

Wifi is available throughout the facility. A hardwire (cat5) connection can be made in the production office if you are carrying your own router. Passwords change frequently and will be provided on the day of show.

## FOH Audio:

APB Dynasonics Spectra-Ti 48/4

*\*balanced insert points/ separate sends and returns, total FOH channel count 48 mono, 4 stereo. 8 Mono channels are dedicated to FX return\**

4 Channels Ashley Protea EQ (L/R,Sub,C Fill)

2 Channels DBX 1231 EQ (Delay Fills)

4 Channels Drawmer DS201 Gates

8 Channels DBX 1074 Gates

4 Channels Symetrix 525 Comp/Gates

4 Channels FMR Audio Really Nice Compressor (Stereo Units)

2 Channels DBX 160A

4 Channels DBX 166 Classic Comp/Gates

2 Channels DBX 166XL Comp/Gates

4 Channels DBX 1066 Comp/Gates

4 Channels DBX 1046 Comps

4 Channels BSS DPR 404 Comp with De-esser

1 Channel BSS DPR 901ii Multiband Compressor

2 Channels Chameleon Labs 7720 Stereo Bus Comp (SSL Style Clone)

2 TC M1XL Reverb/Fx

1 TC D2 Delay

1 TC M350 Reverb/FX

1 Tascam CDRW901MKII CD Burner

1 Behringer UMC404HD 192k/24bit 4 channel USB recording interface (w/Midas preamps)

HP Windows 7 computer with Traktion recording software

Dynacoustics 4 way quad amped system, B&C loaded, 4 flown tops, 2 per side, each top consists of 2x15", 2x10", 1x2"

Aux fed understage subs, 8x18", (folded horn)

Center Fill 1xVRX932LADP (internal power/ processing)

Back Room 2x Dynacoustics T151

Outside 2x JBL Control 30

DBX DR4800 processing

Rane AD22B Delay for center and outside fills

Crown Macrotech power

MA5000 (subs)

MA5000 (low mids)

MA5000 (high mids)

MA600 (highs)

QSC PLX3002 (backroom fills)

Crown XLS 802 (Outside Fills)

## Monitor Audio:

Avid Venue SC48

*\*48 analog inputs and 16 analog outputs, firewire and AES50 networking.*

**\*The Stone Pony does not have digital snake runs to FOH and utilizes copper splits.**

9 15" & 2" Dynacoustics M152 wedges

1 2x15" & 2" Dynacoustics M2152 drum fill

8 Channels DBX 223XL crossovers

Crown Macrotech power for 8 biamped wedge mixes (including cue) and 1 biamped drum fill. Drum fill processing is thru the internal PIP card in the Crown 24x6.

**\*THERE ARE NO SIDEFILLS IN THE STONE PONY DUE TO THE SIGHTLINE ISSUES IN A WIDE, SHALLOW ROOM. THE USE OF SIDEFILLS IS DISCOURAGED AT ALL SHOWS FOR THIS SAME REASON. YOU MUST MAKE ARRANGEMENTS FOR SIDEFILLS WHEN ADVANCING YOUR SHOW IF THEY ARE A NECESSITY\***

## **Mics:**

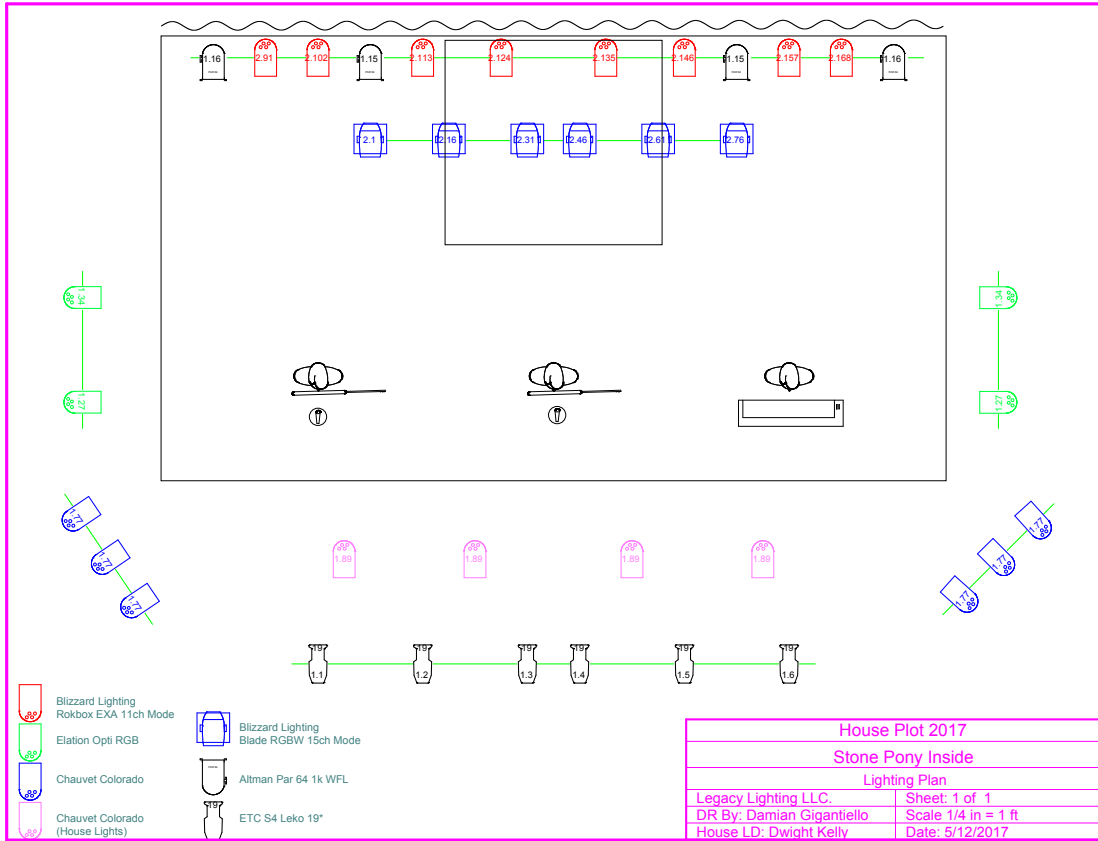
12 Shure SM58  
8 Shure SM57  
1 Shure Beta 57  
2 Sennheiser 609  
3 Audix D6  
3 Audix D4  
4 Audix D2  
2 Audix I5  
5 Audix ADX51  
3 Audix OM2  
1 AKG D11  
2 Samson CO2  
3 DBX DB12 Active DI  
9 DBX DB10 Passive DI  
1 PDC22 Passive Stereo DI

## **Misc Audio:**

4- 8 channel, 1- 12 channel sub snakes  
3- 20 amp power drops, each on a separate circuit with 2 quad ends  
1- 20 amp downstage power drop with quad boxes every 8 feet  
40 channel passive split snake  
24 channel passive split snake  
12 channel drive snake  
80+ XLR in various lengths  
40+mic stands (tall/short booms and round base straight stands)  
150A 3phase camlock disconnect located offstage left, dedicated to audio including the house system

## **Lighting:**

See plot for fixtures. Avolite Pearl Tiger console.  
4 20A circuits are located upstage in the ceiling for additional lighting. Ceiling height is 12' from floor, 10' from stage. Lighting bars range from 6" to 10" below ceiling height. A 400A 3 phase disconnect dedicated to lighting is located outside by the Summer Stage. **250 feet of feeder is needed to reach this disconnect. As most tours do not carry this much, please be sure to advance additional lighting production accordingly so that feeder can be brought in as needed.**



**Trim Height/ Banners:**

10' from stage, 12' from floor, 8'6" to lowest lighting instrument over the stage. Open wood truss construction, no rigging of any equipment to the ceiling truss is permitted. A single bar is available to hang banners, however there is some obstruction from both the lighting rig and the roof construction itself. All banners must have current fire certs, a copy should be emailed during advance or presented to the stage manager at load in. Our fire marshal does a walkthrough before most shows and will almost always ask to review it.

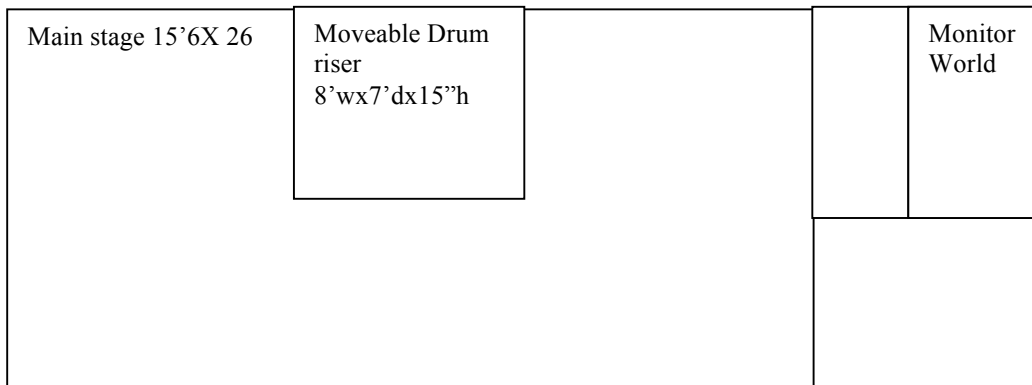
**Stage:**

Stage 15'6 x26x2 with monitor world wing, diagram below.

**The amp racks can not be moved.** It is preferred that the house monitor console that sits on the amp racks stay in place, and that guest monitor consoles are set on the floor SR or SL. Any SR placement of a monitor or backline tech world **MUST** comply with emergency egress needs.

8'w x 7'dx15"h drum riser, 2 pieces, removable

Mojo style steel stage barricade can be utilized when requested. Management reserves the right to require barricade on any show.



## **Local Information:**

### **Emergency**

- Local Emergency Number  
911
- **EMERGENCY**
  - Asbury Park Police Department Desk  
1 Municipal Plaza # 1  
Asbury Park, NJ 07712-7009  
(732) 774-1300
  - Asbury Park Fire Department  
800 Main Street  
Asbury Park, NJ 07712-5987  
(732) 502-4556
  - Jersey Shore Medical Center (approximately 3 miles)  
1945 New Jersey 33  
Neptune City, NJ 07753  
(732) 776-4240

### **Pharmacy**

- Rite Aid Pharmacy (approximately 1 mile)  
901 Main Street  
Asbury Park, NJ 07712  
(732) 775-9083
- Walgreens Pharmacy (approximately 3 miles)  
1905 Corlies Ave  
Neptune City  
(732) 988-2100

### **Department Stores**

- Target (approximately 3 miles)  
2331 State Rte 66  
Ocean, NJ 07712  
(732) 918-6645
- Walmart (approximately 5 miles)  
3575 State Route 66  
Neptune, NJ 07753  
(732) 922-8084

### **Supermarkets**

- Deans Natural Foods (approximately 5 miles)  
1119 State Route 35  
Ocean, NJ 07712  
(732) 517-1515
- Shoprite (approximately 3 miles)  
2200 New Jersey 66

Neptune City, NJ 07753  
(732) 775-4250

**Technical**

- Asbury Audio (full service production company, inhouse vendor, approximately 12 miles)  
Audio, lighting, video, backline, staging, storage, trucking, IATSE crew  
5027 Industrial Road Building 1  
Farmingdale NJ 07727  
732-938-3100
- Audio Technologies (equipment repair, approximately 12 miles, in Asbury Audio facilities)  
732-223-0274
- Radio Shack (approximately 1 mile)  
67 South Main Street  
Neptune, NJ 07753  
(732) 531-8737
- Russo Music (approximately ½ mile)  
Lake Avenue  
Asbury Park, NJ 07712-7103  
(732) 455-8397
- Guitar Center (approximately 5 miles)  
Seaview Square Mall  
2323 New Jersey Rte 66.  
Ocean, NJ 07712. Phone: 732-493-0614
- Sam Ash (approximately 35 miles)  
1831 New Jersey 27  
Edison, NJ 08817  
(732) 572-5595

**Taxi**

- Tops Taxi  
732-776-7711

**Hotels**

- [Empress Hotel](#)  
101 Asbury Ave.  
Asbury Park  
732-774-0100
- [Berkeley Hotel](#)  
1401 Ocean Ave.  
Asbury Park  
732-776-6700

*\*Speak directly to the front desk when asking for the Stone Pony rate. "Reservations" takes you to a third party that cannot apply our discount.*

- [The Asbury Hotel](#)  
210 5<sup>th</sup> Ave. Asbury Park  
732-774-7100
- [Courtyard by Marriott](#)  
600 Hope Road  
Tinton Falls  
732-389-2100
- [DoubleTree by Hilton Hotel](#)  
700 Hope Road Eatontown NJ  
732-544-9300

[Holiday Inn Express Neptune](#)

3510 Rte 66  
Neptune NJ  
732-922-9600

- [Sheraton Eatontown](#)  
Route 35 & Industrial Way  
EatontownNJ  
732-542-6500

**Train:**

- NJ Transit Coastline, Asbury Park Train Station (1 mile from venue)  
[http://www.njtransit.com/rg/rg\\_servlet.srv?hdnPageAction=TrainStationLookupFrom&selStation=8](http://www.njtransit.com/rg/rg_servlet.srv?hdnPageAction=TrainStationLookupFrom&selStation=8)

**Bus:**

- NJ Transit arriving at Asbury Park Train Station  
[http://www.njtransit.com/rg/rg\\_servlet.srv?hdnPageAction=TrainStationLookupFrom&selStation=8](http://www.njtransit.com/rg/rg_servlet.srv?hdnPageAction=TrainStationLookupFrom&selStation=8)

**Airports:**

- Newark International, New Jersey (EWR)  
<http://www.panynj.gov/airports/newark-liberty.html>
- JFK, New York (JFK)  
<http://www.panynj.gov/airports/jfk.html>
- Philadelphia International, Pennsylvania (PHL)  
<http://www.phl.org/Pages/HomePage.aspx>
- Atlantic City International, New Jersey (ACY)  
<http://www.sjta.com/acairport/>
- Monmouth Executive (regional with private jet and helicopter service) (BLM)  
<https://nfdc.faa.gov/nfdcApps/airportLookup/airportDisplay.jsp?airportId=BLM>